



MONTHLY RAINFALL SUMMARY

HIGHLIGHTS FOR AUGUST

- Ten (10) of thirteen (13) parishes received above-normal rainfall.
- No parish recorded meteorological drought conditions.
- Above-normal rainfall is forecast for the island for September to November 2020.
- Higher-than-normal temperatures are still expected for the next three months.

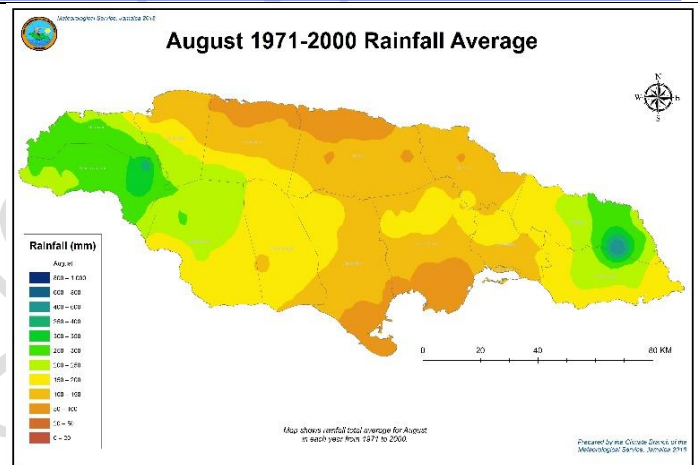
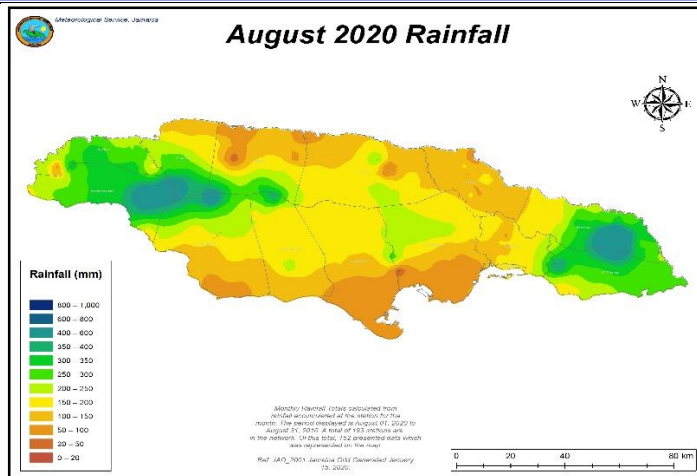


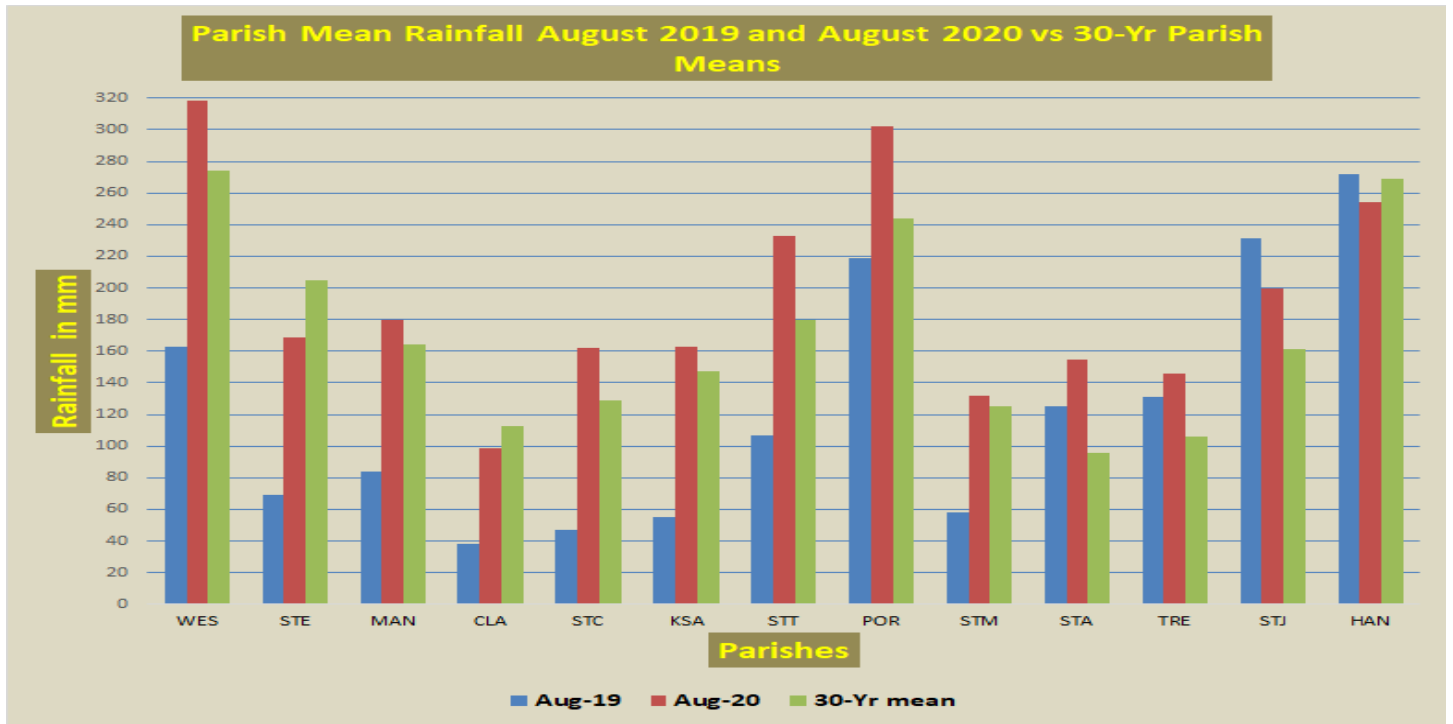
Fig.1. Distribution of Jamaica's Rainfall for August 2020

Fig.2. Mean Island Rainfall for August

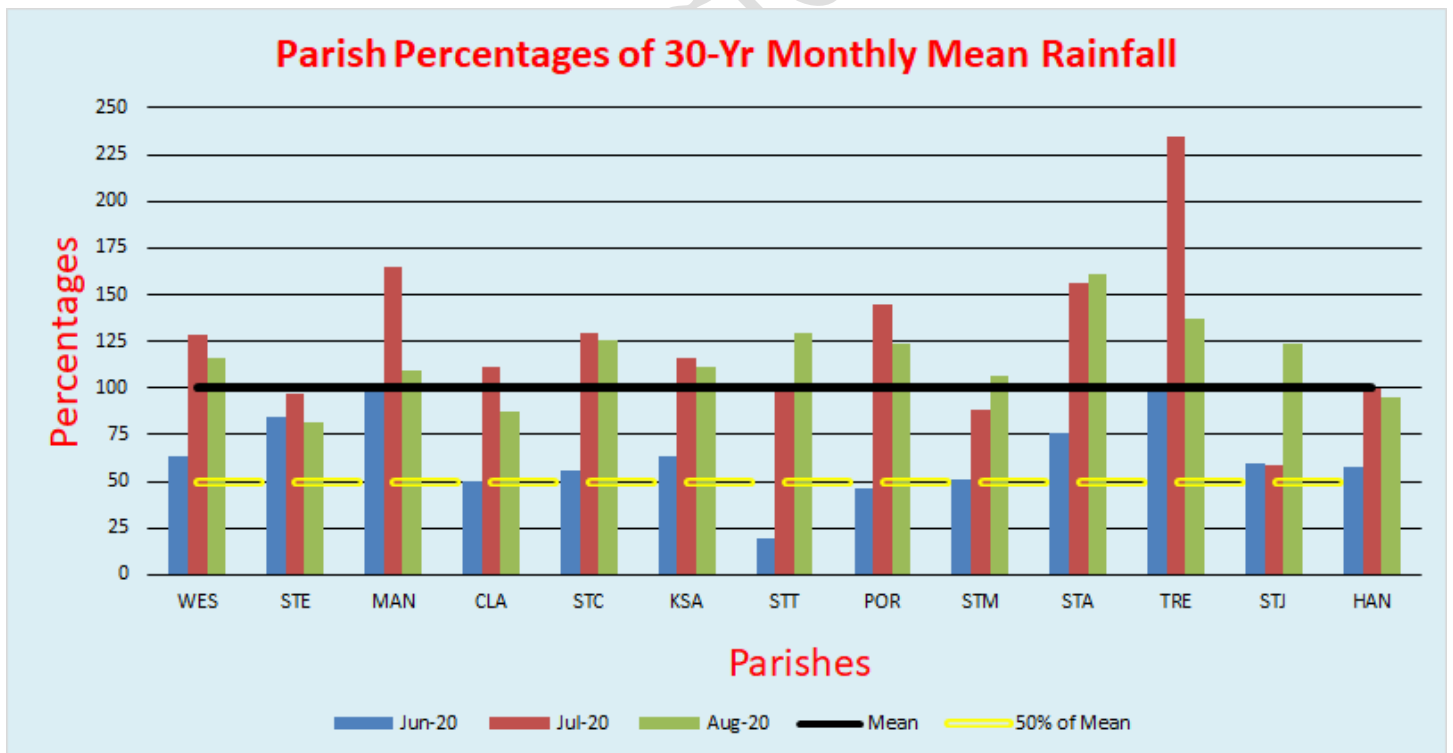
AUGUST RAINFALL SUMMARY

For August 2020, ten of 13 parishes recorded above-normal rainfall amounts and did so with values ranging from 106% to 161%, of their respective 30-year (1971-2000) monthly means. In general, Jamaica also received above-normal rainfall in August; this for two consecutive months in 2020. There was a general improvement of conditions in all 13 parishes as they recorded increases in their SPI values. For eleven of the 13 parishes however, SPI values were positive, with rankings ranging from near-normal (wet) to extremely wet. The remaining two parishes, recorded negative SPI values with both being ranked in the near-normal (dry) class. No parish experienced meteorological drought conditions for the July/August bi-monthly period.

Graph of Parish Mean Rainfall and Comparison with 30-Yr Averages

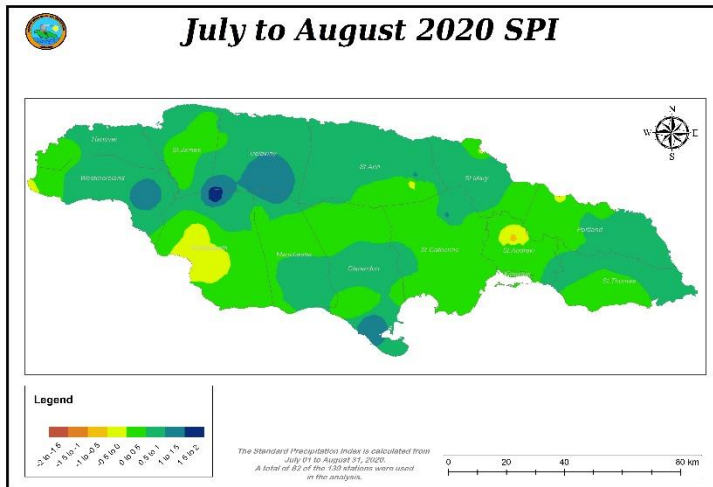


Graph of Parish Mean Rainfall Percentages



[Click here to visit our website for additional information](#)

Drought (SPI) Discussion:



For the July/August period, all 13 parishes recorded increases in their SPI values. Eleven of the 13 parishes, however, recorded positive SPI values and rankings ranging from near-normal (wet) to extremely wet conditions. The remaining two parishes, therefore, recorded dryness in the near-normal (dry) class.

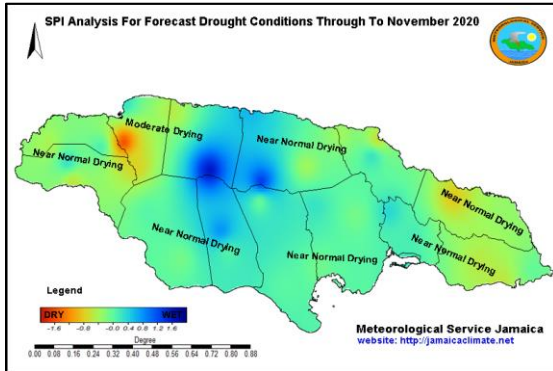
Analysis of the July/August parish SPI values indicated that St. Thomas recorded the largest increase in SPI value with +1.22 followed by St. James with +1.06, Westmoreland with +0.99, Portland with +0.90 and Hanover with +0.89, being the top five parishes to do so. In the cases of St. James, Westmoreland and Portland, their SPI increases resulted in changes of three severity classes each, the most from among the parishes. There were four other parishes which experienced changes by two severity classes; four more parishes experienced changes by one severity class and the remaining two parishes experienced no changes in severity class despite, marginal increases in their SPI values.

None of the 13 parishes experienced meteorological drought conditions during the July/August period. For ten parishes however, this represents a reversal in conditions, as, they experienced significant dryness in the May/June period, to significantly wet conditions in the July/August period. Trelawny, for a third consecutive bi-monthly period has recorded the highest SPI value, with 1.84, this representing a classification in the extremely wet class. Westmoreland had the 2nd highest SPI value of 1.44, as conditions became wetter moving from near-normal (wet) to severely wet, Meanwhile, Portland had the 3rd highest SPI value of 0.84, as conditions also improved from near-normal (dry) to moderately wet. There were seven parishes; namely St. Elizabeth, Manchester, St. Catherine, St. Thomas, St. Mary, St. Ann and Hanover which all recorded SPI values in the abnormally wet category. Clarendon experienced near-normal (wet) conditions while, Kingston & St. Andrew and St. James experienced near-normal (dry) conditions; however, in the case of the latter parish conditions were severely dry in the preceding June/July period. St. James also recorded the lowest SPI value with -0.34, this making it 2 consecutive bi-monthly periods of this occurring.

[Parish Drought \(SPI\) for May to August 2020 and Drought Severity Classes \(click here to view\)](#)

Precipitation and Temperature Outlook

September to November 2020



The forecast for Jamaica for the September to November period, indicates that rainfall totals are likely to be above-normal. The indications are that some western and extreme eastern parishes could experience lower rainfall amounts when compared to some central parishes. Based on the projections (map to the left), moderate drying could affect sections of western St. James, while

near-normal drying is expected over Hanover, Westmoreland, St. Elizabeth, St. Catherine, St. Thomas, Portland and St. Mary; however, confidence in this projection is low given the current wet conditions for these parishes. Wet conditions should continue over Trelawny and Manchester. St. Ann however, is presenting an interesting case, as, the western half of the parish should experience wetter conditions when compared to the eastern half of the parish.

With no parish experiencing meteorological drought conditions in the July/August period and with the forecast of above-normal rainfall for the next 3 months, this could make for contrasting conditions in 2020, where, during the first 6 months the island experienced extremely dry conditions and for the latter 6 months, wet conditions.

Although the temperature forecast for the next 3-months remains at above-normal, the possibility of heat stress impacts should decrease, especially on those days with rainfall. This should make for comfortable day time and cooler night time conditions.

As the Meteorological Service continues to monitor conditions across the island, the advice is for stakeholders is to plan ahead for the future. While there may be a consistent supply of water for use now, be mindful of the traditional dry season still to come in the first quarter of 2021.

CONTACT US:

Meteorological Service, Jamaica

65 ¾ Half Way Tree Road, Kingston 10

Telephone: 876-929-3700 / 876-929-3706

Email: datarequest@metservice.gov.jm